



SPRING NEWSLETTER

President’s and Chairperson’s Report

Rob Phillips, WSRA President and Jennifer Wood, WSRA Chair

Welcome back Waskesiu Seasonal Residents! On behalf of the volunteer Board of Directors, we’d like to thank you for your support. We’re thrilled to be part of such a dynamic and close-knit community, working with Parks Canada, the Waskesiu Community Council, and others on matters of common interest to cabin and cottage owners in the Waskesiu townsite.

Cabin and cottage development guidelines impact all leaseholders, so this is a major focus area for us. We’re working closely with Parks Canada and the Waskesiu Community Council on drafting new cottage development guidelines for Waskesiu. Updates will be provided at the AGM.

We continue to work collaboratively with Council, PCA and all the other organizations on Waskesiu Vision 2028, the community action plan that ensures Waskesiu is a strong and vibrant community for future generations, while respecting and maintaining the principles that guide Parks Canada. Vision 2028 coincides with the centennial celebration for Prince Albert National Park. Planning is underway!

Quick reminders:

- Keep the rubber off the road. When parking on the Bird Streets, ensure your tires are not on the paved roadway. This helps improve traffic flow, enhances safety & sight lines, and ensures service and emergency vehicles have the access they need.
- Membership rates will have a modest increase effective August 10, 2024 to \$35/year or \$125 for a 5-year membership



- Renew or purchase your membership at the old rate of \$30/year or \$100 for a 5-year membership until August 9, 2024
- Mark your calendars for **Sat. Aug. 10 at 9:00 am** at Terrace Gardens and attend the:
 - Waskesiu Community Council AGM
 - WSRA AGM
 - Park Canada Agency’s update to the Waskesiu community (including a Q & A session)
 - Fundraising BBQ in support of the Waskesiu Volunteer Fire Department at 12:00 pm
- Submit your WSRA or Parks Canada questions by July 26th to waskesiusra@gmail.com

If you have any questions including the status of your membership, feel free to reach out to us anytime at waskesiusra@gmail.com. See you at the lake!

A Peek Inside	Chamberp. 9
Parks Canadap.2	Lobstick Golf.....p.10
Community Council....p.5	Friends of the Park...p.10
Foundation.....p.6	Calendar of Events...p.11
Recreation Assoc.....p.7	More from PCA.....p.11
Lakeside Music Fest...p.8	Last word WSRA.....p.14
Museum.....p.9	
Important Info on Aquatic Invasive Species: p.2 and p.6	

Parks Canada

Townsite News

Help Keep Aquatic Invasive Species Out of Prince Albert National Park - a Shared Responsibility

Healthy rivers and lakes are crucial for the ecosystem health of Prince Albert National Park. This health is threatened by aquatic invasive species that are spreading across Canada.

Aquatic invasive species are non-native plants, animals and invertebrates introduced to ecosystems accidentally or intentionally by human activity. Once established, aquatic invasive species are difficult, even impossible, to eradicate. The spread of these species has serious consequences.



©Emilio Concari - iNaturalist
Zebra Mussels

Aquatic invasive species:

- Damage critical infrastructure.
- Impact lake, beach, and fishing visitor experiences.
- Devastate lake ecosystems and biodiversity.
- Impact already vulnerable species at risk.



© Saskatchewan Sportfish Research Group

Prussian Carp

Clean, drain and dry your watercraft and gear between, before and after each visit to the park.

Clean: Inspect and thoroughly clean all mud, sand, plant and animal materials from your watercraft, trailer and water-related gear. This includes boats, paddle boards, fishing gear, etc.

Drain: Drain all water from your watercraft and water-related gear. This includes bilges, live wells, buckets and other items or compartments that may hold water. Pull the plug on your boat every time your watercraft moves between waterbodies.

Dry: Dry all parts of your watercraft, trailer and water-related gear between trips to Prince Albert National Park. Leave compartments open and gear in the sun until dry. Use paper towel, rags or soft cloth to speed up the process.

Know Before You Go: It is illegal to transport, possess or release aquatic invasive species in Saskatchewan.

Know the regulations of the places you plan to visit this summer:

- [Federal Aquatic Invasive Species Regulations](#)
- [Saskatchewan Environment](#)

Learn more about [preventing aquatic invasive species from entering Prince Albert National Park](#).

Stay Emergency Ready: Plan ahead

Parks Canada is committed to providing visitors with exceptional outdoor experiences. All visits to national parks have risks. Visitors are responsible for making well-informed decisions for their safety and the safety of others, and preparing for the unexpected.

Be prepared for all situations in Waskesiu, including emergencies. In the event of an emergency in the park, know how you and your family will handle the situation in advance. Planning ahead will help you act quickly and stay focused when the unpredictable happens. To prepare, follow these three steps:

1. **Know the risks** - Emergencies don't take vacations. While visiting the park, you may encounter emergency situations. Help keep resources focused on emergency response and be prepared to be self-sufficient for at least 72 hours after an emergency. First responders will be focused on the situation and may take time to reach you or your family.
2. **Make a plan** - Get together with friends and family to create an emergency plan. It is important to know what everyone will do in an emergency before it happens. As you write your plan, consider possible scenarios, plan to take your pets with you and account for the specific needs of family members, such as limited mobility or medical requirements. Once completed, give a copy to everyone and review it regularly.

3. **Get an emergency kit** - As part of your yearly planning, buy or put together an [emergency kit](#). This will make it easier if you and your family need to leave quickly. Keep it somewhere where it is easy to get and light enough to lift it into a vehicle.

Call 911 for police, structural or vehicle fires, or ambulance service. For other concerns, call Parks Canada Dispatch at 877-852-3100. Response times may vary, and help may not be immediately available. Have an emergency kit nearby so you have basic survival items available to you and your family until help arrives. For more information, visit the park's [safety information page](#).

Save Time and Pay Online

Pay for your utilities (water/sewer, garbage), land rent, and commercial leases with a credit card online. Visit parks.canada.ca/payment and follow the instructions to pay bills quickly and easily! The webpage is available to all clients with a customer account and/or invoice number. To find your customer number, contact npfu-finance-finances-ugpn@pc.gc.ca

Waste Management in Waskesiu

The health and safety of residents, commercial operators and visitors is a priority for Parks Canada. Parks Canada provides waste collection services and facilities to keep Waskesiu clean and free of wildlife attractants.

Don't miss Yard Waste pick up day! Remember to bag compostable yard waste : June 12, 26; July 3, 17, 31; August 14, 28; September 4, 18.

Residents are asked to bag their yard waste in compostable paper bags designed for yard waste and leave it at the edge of their yard for pickup according to the scheduled pickup days.

Put waste in the right place

Parks Canada appreciates the diligence of residents and businesses in properly disposing of waste. Knowing where to sort waste is a step towards greener living.

Recycling – at the recycling depot off Montreal Drive

Garbage – in the brown bins located around the townsite.

Roll-Off Bin (for small project construction waste including windows and frames, deck boards, scrap wood, dry wall, and carpet) – Located at the Operations Centre. The Roll-Off Bin is a seasonal receptacle for residential construction waste located at the Operations Centre. All material must be put **in** the bin, do not leave materials on the ground. *This bin is not intended for the disposal of construction waste from commercial properties or contracted work done on cabins.* Contractors are expected to dispose of their own waste when working on cabins. Commercial operators are required to remove their construction waste from the park and dispose of it. Please remember that disposing of construction waste in the waste bins in the residential area can damage equipment. The cost of fixing equipment is charged to residents. **The area is monitored by video camera.**

Hours of Operation: Open daily 8:00 a.m. to 3:00 p.m. from **May long weekend to September long weekend**. Open weekdays 8:00 a.m. to 3:00 p.m. after **September long weekend until Thanksgiving**. Please email panpassets@pc.gc.ca for more [information or](#) to book an appointment for weekend drop off in the fall.

Improperly disposed waste costs the leaseholders in Waskesiu.

Abandoned waste incurs additional cost because it takes additional staff time to dispose it properly and damages park equipment. These additional costs are passed on to all leaseholders through their annual garbage bill.

Remember - deliberately abandoned waste and/or improper use of disposal facilities is a violation of the National Parks of Canada Garbage Regulations under the Canada National Parks Act. Violators can be charged and face court appearances and fines.

Help us get a good grade in garbage. Waste Assessment happening in 2024.

In response to the McPhee Landfill closure expected in the fall of 2026, we are finding a solution to the current summer process of hauling waste directly to the McPhee Landfill.

A waste management consultant will conduct an assessment to review and evaluate current waste management practices in Waskesiu, gather information about current and future waste

management needs, and provide a detailed options analysis. By properly disposing of waste, you will help us determine the best possible options for future waste management and keep costs as low as possible.

As a result of the assessment, there will be changes to Prince Albert National Park’s waste management strategies in the coming years. The high level of service you’ve come to expect will remain the same, as will the expectation that you continue to dispose of waste according to the policies and directives. As you know, the cost of managing waste in Waskesiu is shared by residents, commercial operators and Parks Canada.

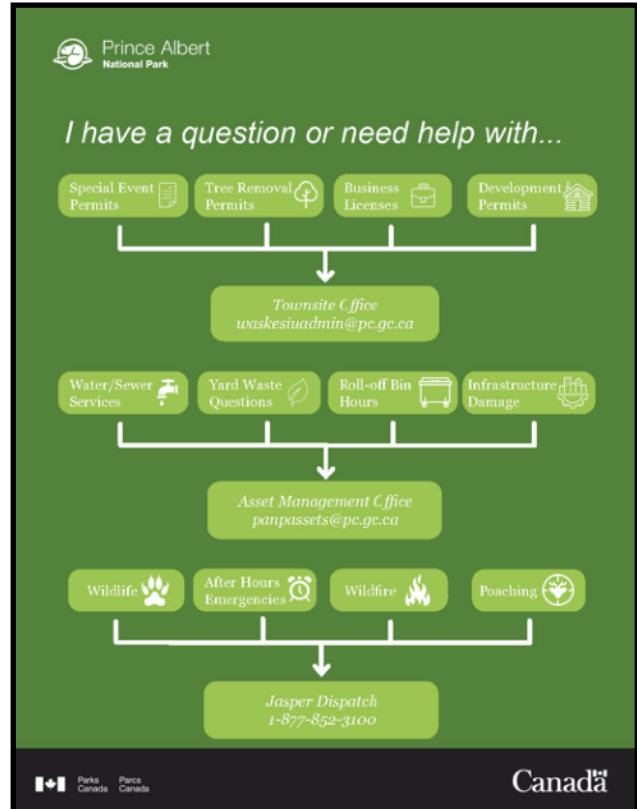
Wildfire Risk Reduction News

Parks Canada takes wildfire seriously and is taking preventive measures to reduce the wildfire risk to Waskesiu and neighbouring communities. Proactive risk reduction is essential for public safety, visitor experience, and to protect natural and cultural resources.

Wildfire risk reduction maintenance operations continued in select areas of Waskesiu this past winter. Pruning trees and reducing coniferous undergrowth in this way enhances the effectiveness of Wildfire risk reduction efforts within the townsite.

Wildfire reduction work began in the winter and is underway in the townsite. Residents may notice significant thinning of spruce trees and underbrush in the areas from Bluebird Street to along Tamarack Street, behind Lily Street, in the area behind the community mail boxes, as well as in Beaver Glen Campground. While this may alter the familiar landscape, please understand that it is a crucial step towards protecting Waskesiu against wildfire threats. A fuel break may appear to

be a major change at first glance, but the area recovers and renews within one to two years with young plant life. The renewed area creates habitat for songbirds in the open forest canopy and for elk and deer who feed on the fresh greenery below.



FireSmart is a national program that helps Canadians increase their resilience to wildfire. Their resources include information to help protect you, your family, and your property from wildfire. Here are some simple ways to FireSmart your property this summer:

- Remove sticks, dry leaves and fallen trees around your home
- Clear gutters, eaves and vents
- Keep windows clear
- Trim trees
- Keep porch and decks clear or screened
- Screen or seal all soffits
- Take care of your lawn
- Keep sprinklers handy

Removing or trimming trees is prohibited in Prince Albert National Park without proper permits. For inquiries about trees on your property, or if you are interested in making your property FireSmart this summer, contact the Townsite office at waskesiuadmin@pc.gc.ca

Join the new Parks Canada mailing list!

[Subscribe to the Prince Albert National Park/Parks Canada email newsletter](#) to stay informed about upcoming events, important park updates or conservation work, delivered right to your inbox!

Select the Parks Canada topics you are interested in receiving email updates for, including:

- General Information
- Waskesiu Updates
- Fire Information
- Science and Conservation

English: <https://ow.ly/vKnG50QHhEq>
 Français: <https://ow.ly/XXNZ50QHhEI>

A Word from the Park Superintendent

*Jennifer Duquette, A/Superintendent,
Northern Prairies Field Unit*

Greetings from Parks Canada!

I'd like to begin by respectfully acknowledging that these lands and waters are Treaty 6 territory, and that all people here are beneficiaries of this treaty. These territories encompass the lands of the nîhithaw (Woodland Cree), nêhiyawak (Plains Cree), Dene, Dakota and the homeland of the Métis. I am grateful for their stewardship, past, present and future, and recognize the importance of strengthening our relationships to guide the path forward.

On behalf of Parks Canada, I'd like to welcome you back for another summer in Prince Albert National Park. I am pleased to be back in the land of big skies and big wildlife, having spent the operating season here in 2022. I am looking forward to reconnecting with you and to reacquainting myself with my favourite spots in the park, as I'm sure many of you are too. We are looking forward to seeing you this summer and hope you and your loved ones have another safe and enjoyable season in this special place.



Prince Albert National Park is a true gem in the Parks Canada network. With 3875 km² of protected area, this place has a rich Indigenous history since time immemorial. Today, there are 13 First Nation and Métis communities with ties to these lands and waters. It is a priority for Parks Canada to ensure Indigenous peoples are actively involved in park management decisions.

These lands and waters hold an intricate web of biodiversity. Some of this we can see in the majestic wildlife like elk, bear, moose, and bison, while some is just below the surface, like the lake trout, walleye or birds nested in hollows of trees. Parks Canada is committed to preserving and protecting this

biodiversity so future generations can experience the same wonder as visitors today.

Prince Albert National Park also takes pride in ensuring every season offers high quality visitor experiences such as camping, interpretation programs, and supporting community recreational activities and events. We can all take great pride in the role we all play in making Waskesiu a vibrant community that has become a summer destination for so many. There are so many things to enjoy in Waskesiu!

Thank you for your continued support of the health and vibrancy of this beautiful national park around you so that it can be protected and preserved for present and future generations. This newsletter contains important information and reminders about townsite protocols and living safely in Prince Albert National Park. As you begin your summer, please ensure you are informed. The Townsite Office and the Visitor Centre are available to answer any questions you may have about the information included below.

Have a wonderful summer!

Waskesiu Community Council

Jim Kerby, Council Chair

We acknowledge that Waskesiu is on the traditional lands of the Cree Peoples, signatories to Treaty 6, and the Homeland of the Métis. We pay our respect to the First Nations and Métis ancestors of this very special place and reaffirm our relationship with one another.

2024 is an Election Year

This is an election year for the entire Community Council. All seven (7) Council seats are up for election, with Councillors agreeing to serve a three (3) year term commencing in early August of 2024. Please consider running for Council or encourage quality candidates to put their names forward. Full election details can be found on [Waskesiu.org](https://waskesiu.org) (under "Community News"), but here are the highlights:

1. **Nomination Deadline:** Completed nomination forms must be received by **4 p.m. on Friday, July 5, 2024** either:
 - a. by mail (addressed to the Returning Officer c/o Waskesiu Community Association, Box 203, Waskesiu Lake, SK, S0J 2Y0); or

- b. at the PANP Administration Office,
Attention: Gregg Rutten.
2. **Nomination Packages:** Nomination packages can be obtained from the PANP Administration office or on-line at <https://www.waskesiu.org/community-news>.
 3. **Advance Poll:** Sunday, July 28, 2024 - Waskesiu Recreation Hall – 10 a.m. to 4 p.m.
 4. **Election Day:** Sunday, August 4, 2024 – Waskesiu Recreation Hall – 10 a.m. to 4 p.m.

What is AIS and why does it matter?

It is critical that everyone in Waskesiu learns about AIS, the acronym for Aquatic Invasive Species.

The term “AIS” includes zebra and quagga mussels, whirling disease, Eurasian water milfoil, some species of carp, and other aquatic invasive species. Among the worst AIS are Zebra and quagga mussels - prodigious filter feeders, they strip nutrients from the water leaving little or no food for native species. This affects the entire food web, impacting plant and animal life in the region, and altering water chemistry and clarity. Many jurisdictions have taken action to prevent their spread because **infestations are permanent and irreversible**. [Learn more about invasive mussels](#).

Lake Winnipeg in Manitoba is already experiencing the devastation that occurs when a waterbody is infected with AIS. Concerns regarding Zebra mussels in Riding Mountain National Park have resulted in a **total ban of ALL watercraft** (motorized and non-motorized) from accessing Clear Lake, Manitoba. The presence of AIS in Alberta has led to significant restrictions and quarantines regarding use of watercraft (including in Waterton Lake). This is incredibly serious. We need heightened public awareness combined with thoughtful, effective action.

The ultimate goal is to prevent the establishment of AIS in Prince Albert National Park. It is up to our community – working in partnership with Parks Canada and the Province of Saskatchewan – to: (1) understand the *enormity* of this issue, and (2) take steps to prevent *catastrophic* (and in some cases irreversible) damage to waterbodies throughout the Park. Please watch for more information regarding

AIS – and please be part of the solution (not part of the problem).

To learn about what’s happening in Waskesiu, please visit Waskesiu.org regularly. As Council’s community website, it is updated frequently, and it’s packed with information about “*what’s new in Waskesiu*”. It’s also mobile friendly, making it easy for you to stay connected with Waskesiu wherever you go.

Waskesiu Vision 2028

Our community is committed to pursuing a shared, long-term vision for the Waskesiu townsite. We did so by developing “*Waskesiu Vision 2028*” - a community action plan designed to help protect, and enhance, the Waskesiu experience now and for generations to come. By working collaboratively, we’re already making our collective “vision” for Waskesiu a reality – and remarkable things are happening.

A Tip of our Hat

In closing, we extend special thanks to the WSRA for all of the excellent work you do on behalf of Waskesiu’s cottage and cabin owners, and for Waskesiu as a whole. The Community Council appreciates your ongoing and valuable partnership with us. Noteworthy progress continues to be made on many joint files including townsite parking strategies, tree removal, and draft cottage development guidelines.

On behalf of the Waskesiu Community Council we wish you, and your family, a wonderful, happy, and safe summer filled with the joys of nature!

Waskesiu Foundation

Hello to all seasonal residents in Waskesiu! We’re thrilled to share that 2024 marks our 25th anniversary. Since 1999 we’ve been supporting recreational, social, cultural, and environmental activities that enhance the Waskesiu experience, and we thank the community for donating over **\$4.3 million** for community projects.



We’re celebrating with an epic event featuring the **Steven Page Trio** and our **25th Anniversary After Party** on Thursday, July 11, 2024, which is

proudly supported by Rob & Diane Phillips and hosted by the Waskesiu Foundation.

Steven Page has one of the most recognizable and enduring voices in music. As a co-founder, vocalist and songwriter for Barenaked Ladies, Steven sang and wrote classics like “Brian Wilson,” “If I Had A Million Dollars,” “It’s All Been Done” and many more.

Steven will be joined by Craig Northey on guitar, and Kevin Fox on cello. The trio will provide the perfect balance of intimacy and power to fill **Twin Pine Cinema**. Special thanks to Chris & Lori Astle of Twin Pine Cinema and their dedicated team for all their hard work!

Sponsorships are available with complimentary tickets included at select levels. Tickets are on sale now, but they won’t last long! Admission is by advance tickets only while supplies last. Visit <https://waskesiufoundation.ca/steven-page-trio> to purchase tickets or sign up as a sponsor. Ticket purchases are eligible for a partial tax receipt. Email us at admin@waskesiufoundation.ca with any questions!

Immediately following the concert, we're hosting our 25th Anniversary After Party at Happy Campers Bar & Grill. Enjoy light appetizers, a sweet treat, and a champagne cocktail to toast 25 years. This stand up social will be your chance to visit with friends & neighbours after the show, plus grab another bite or beverage. Purchase tickets early along with your concert tickets because restaurant capacity is limited. Huge thanks to Happy Campers Bar & Grill and their staff for their support!

Project Update

In addition to the 25th anniversary event, we’re busy planning **Phase 3** of the **Waskesiu Recreation Area Renewal** project with our partners at the Waskesiu Recreation Association. Phase 3 covers a whole host of items, but most notably includes constructing a new recreation office building and two new **pickleball courts**. Pickleball is hugely popular in our community, and we’re excited to kick-off a \$150,000 fundraising campaign this season. Stay tuned for further details! Show your support today by donating to Recreation Renewal at <https://waskesiufoundation.ca/donate-now>.

Camp Kitchens

Families and individuals are often looking for a way to recognize loved ones in the community. Sponsoring a camp kitchen is a great way to do just that! Camp kitchens available for sponsorship include one near the newly renovated ball diamond, one near Waskesiu Drive and Mallard, and one at South Bay. A plaque with custom wording of your choosing is installed in sponsored camp kitchens and proudly displayed for all to see. Reach out for additional details at admin@waskesiufoundation.ca.

Waskesiu Recreation Association

The Waskesiu Recreation Association (WRA) strives to be an important part of everyone’s Waskesiu experience!

Established in 2016, the WRA is a community focused nonprofit organization. Our mission is to provide outstanding recreational facilities and cultural activities for Waskesiu visitors and residents.

The WRA operates a modern, diversified sport park located in the town centre featuring “L’il Al’s Mini Golf” - a fun, challenging, nature-themed 18-hole mini golf course. Season or weekly pass holders - along with daily fee paying visitors - can enjoy



tennis, pickleball, lawn bowling, beach volleyball, basketball, floor hockey, outdoor ping pong, outdoor foosball, giant chess/ checkers, shuffleboard, an adult fitness park, a children’s ninja park... and more!

The WRA also hosts several of Waskesiu’s iconic summer events, including the Canada Day parade, beer gardens, and pancake breakfast; the Waskesiu Children’s Festival; the Grey Owl Howl; the Beach Bums Bash; and the extremely popular Waskesiu Lakeside Music Festival.

Since 2016, WRA projects have been numerous and ambitious. The WRA volunteer Board of Directors believes that offering an array of outstanding recreation facilities, and quality family events, is of significant economic and cultural benefit to our community. This fall - in partnership with the Waskesiu Foundation - we hope to break ground on “Phase 3” of the Waskesiu Recreation Area Renewal project. Phase 3 project plans include adding two dedicated pickleball courts to meet growing demand, building a replacement recreation office building, and improving on-site vegetation.

Your patronage of WRA facilities and events, your volunteer participation, and your donations through the Waskesiu Foundation for infrastructure are greatly appreciated. They are also an important way to ensure our success - so we can continue to reinvest in our wonderful community.

The WRA sports park is open daily from the May long weekend to the September long weekend, weather permitting. For more information please visit us at 1500 Montreal Drive in Waskesiu (next to the tennis courts). You can contact us at (306) 663-0601 or via email at wramanager21@gmail.com, or visit our website at waskesiorecreation.ca.



Lakeside Music Festival



Grab your dancing shoes, or just kick back and enjoy the wonderful musical performances at the 2024 Waskesiu Lakeside Music Festival (the “**Lakeside Festival**”) presented by [Phantom Light Distillery](#). It’s Waskesiu’s biggest event of the year!

The Lakeside Festival weekend is jam-packed with a variety of free family activities, including live on-stage musical entertainment on Friday evening, all day Saturday, and on Sunday afternoon. Saturday also features a children’s play area (including a free bouncy castle & face painting). You can also enjoy a variety of great food vendors, the Lakeside Festival [Original 16 Beer Gardens](#) (on Saturday), and a car show, Lakeview Drive street fair and Indigenous talent showcase on Sunday.

The Lakeside Festival is proudly hosted by the [Waskesiu Recreation Association](#). This year’s festival features more than 20 hours of free musical performances from over 15 groups covering multiple genres. Join over 5000 music fans for a unique outdoor experience that could only happen in beautiful Waskesiu!



Save the date and invite your family and friends to join you! The Lakeside Festival is definitely “*the place to be*” from **August 23 to 25**. For more information, please visit lakesidefestival.ca.

And remember, if you love the Lakeside Festival as much as we do, there are lots of ways to help support it. They include buying Lakeside Festival merchandise, 50/50 tickets, and volunteering your time. Sponsorship opportunities are still available, and donations (eligible for a charitable tax receipt) are always welcomed via the Waskesiu Foundation (waskesiufoundation.ca).

Waskesiu Heritage Museum

We are all eagerly looking forward to summer when we can leave behind the hustle of everyday life and enjoy peaceful mornings, sunny afternoons, and beautiful sunsets on Waskesiu Lake.

Close your eyes for a moment. Listen to the waves on the shore, the call of the loons, and the wind in the trees. Imagine a time when life was simple. There were no cellphones to entertain us. Instead there was a spin around the roller rink. And tweets were something you heard from the birds in the trees. It was a time when you would gather in the Camp Kitchen with friends and family, to enjoy a meal, join a sing-a-long, or play a game of cards. You would fall asleep at night to a lullaby of gentle raindrops as they danced their way across the roof of your shack tent. While you can no longer stay



overnight in a shack tent, and sadly the roller rink is a thing of the past, you can still be reminded of days gone by at the **Waskesiu Heritage Museum**. Inside the Museum, we have lots of interesting artifacts to see, or you can visit our fire cupola, replica Shack Tent, and portable cabin on our

grounds. The popular camp kitchen is a nice place to relax, sip your coffee, and watch the world go by.

Out and about around town? To learn more about the history of Waskesiu, scan the QR codes on the award-winning **Heritage Moments** signs that can be

found on various businesses throughout the townsite.

The season kicks off with our entry into the annual **Canada Day Parade**. Grab your lawn chair, find a spot along the parade route, and give us a wave and a cheer as we pass by.

Stop by the Shack Tent to meet our wonderful staff. While there, you can also purchase a **raffle ticket on a fully accessorized folding Biktrix E-bike**. The draw will be Saturday, August 31st at 2:00 p.m. Tickets are a steal of a deal at only \$5.00 each!

Looking for an evening of family fun? Our weekly **Bingos** at Terrace Gardens start on Wednesday, July 3rd. Bingos are every Wednesday, with the exception of August 7th. Bingo that week will be Friday, August 9th. Try our ice-cold drinks and tasty treats from the concession.

Enjoy shopping at the lake? Our annual **Yard Sale** will be held this year on Saturday, July 13th from 9:00 a.m. - 2:00 p.m. This event is always a lot of fun and many a great bargain can be found! Donations of items for sale are always welcome. All proceeds from the Yard Sale, Raffle and Bingo go towards the operation of the Museum, enabling us to have free admission to our building and exhibits.



If you have some free time, we always welcome volunteers. Visit our website, Instagram account, or Facebook page for details on upcoming events and stories from the past.

Waskesiu Chamber of Commerce

Chris Astle, President

The Waskesiu Chamber of Commerce is excited to kick off the 2024 season and see friends old and new. The Chamber of Commerce is a non-profit organization that advocates for local business, and acts as a vehicle for engagement and promotion. The organization was founded 65 years ago and has been instrumental in creating many fond memories for generations over these decades.

Membership in the Chamber extends beyond Waskesiu into surrounding Lakeland community and Prince Albert and includes family and corporate

businesses, and diverse non-profits, all representing a multitude of industry sectors throughout the region.



In September 2023 a new Board of Directors was elected and has met numerous times since to share thoughts and expectations in moving the Chamber forward. They have also connected with community organization leaders and are excited to work together to make Waskesiu an even better place to visit and do business.

Looking Forward, Never Back

Our main priorities through 2024 are:

- *Chamber Strong – Creating a strong, sustainable Chamber. This includes a review of the organization structure, and mission.*
- *Community Strong – Supporting community initiatives to enhance the Waskesiu experience. This includes a review of existing services, e.g. hall/space rental, and opportunities to work with existing and potential organizations, e.g. Destination Marketing Organization.*
- *Business Strong – Creating an environment where Waskesiu businesses thrive. A strong economic environment requires a strong community. We are truly fortunate to have leaders, business owners, and citizens who realize that we all share in the responsibility of creating economic success and happiness within our community.*

Waskesiu Lobstick Golf Course

Tyler Baker, G.M.

Greetings from Waskesiu Lobstick Golf Course.

Our classic Stanley Thompson designed course is cut through the majestic spruce forests of PANP. Enjoy beautiful course conditions and sighting elk and other animals we are famous for. Tee time bookings are on generous 10 minute intervals to ensure our patrons a nice pace of play. Rental power carts, pull carts and clubs are available.

In 2022 the golf course was rated as number 83 in the Top 100 in Canada, and in 2023 we were rated 22 in the best public courses in Canada. We are very

proud of these ratings, which show off the hard work Gary Cross, our Superintendent, puts into the course.

We have some exciting things happening for 2024. Over the winter, we hired a new Food & Beverage Manager, Chuck Mason. Chuck brings a wealth of experience, and we are looking forward to a new menu that he is creating. Be sure to visit our historic Clubhouse and enjoy a meal, a snack or a beverage inside or out on the deck.



Our Proshop offers a full selection of men's and women's golf attire, equipment and rentals. Lobstick logoed wear is extremely popular with golfers and nongolfers alike. Paul Schatz returns as our CPGA golf pro and offers lessons to everyone from beginners to skilled players.

The driving range features all new hitting mats, ball trays, dividers and ball dispenser. With the expansion there is plenty of room to come by and take a few swings.

The famous Lobstick Golf Tournaments return once again this season. Mens and Seniors Lobstick Tournaments will be held in June. Ladies, Junior Womens and Junior Mens Lobstick Tournaments are in August.

We hope to see you out at the course this season. I encourage you to drop by for a look or a visit with myself, Paul or Chuck.

Friends of the Park

Friends of the Park are continuing the tradition of creating a welcoming, culturally vibrant community space.

They will be hosting a "Welcome Back to Prince Albert National Park" BBQ on the Saturday of the May long weekend (May 18), with free hotdogs and water for old and new friends, in other words - everyone!

In July they will be hosting Saturday morning activities for children, featuring crafts, a Lego Castle, stories, face painting and games. After lunch on Saturdays they will once again host “Music in the Sui”, featuring a variety of artists.

On August 23, the Friends of the Park will host the Lakeside Music Festival pre-party at the Terrace Gardens.

In addition, Friends of the Park will continue the operation of a unique non-profit bookstore in its iconic building, shared by the museum, with an outstanding inventory of books for all ages on a wide variety of topics and genres, as well as hand-crafted gift wares. There is something for everyone at Friends of the Park.

Calendar of Events 2024	
June 14-16	Waskesiu Open Tennis Tournament
June 29	Canada Day Weekend Cabaret
July 1	Canada Day Celebrations
July 3	Museum Wed Bingo begins
July Saturdays	Friends of the Park: Children’s activities and “Music in the Sui”
July 13	Heritage Museum Yard Sale
July 11	Waskesiu Foundation 25th Anniversary Steven Page Trio and Afterparty
July 20th	Children’s Festival
August 3	Beach Bum’s Bash Cabaret
August 4	Grey Owl Howl
August 10	WCC/WSRA joint AGM followed by lunch bbq fundraiser by the Waskesiu Volunteer Firefighters
August 23-25	Waskesiu Lakeside Music Festival
Sept 6-8	Reel Rave Film Festival
Sept 21	Outter Limits Fun Run/Walk
November 11	Remembrance Day Commemoration

More News You Can Use from PANP

Welcome N. Scott Nesbitt, Realty and Development Advisor.

Prince Albert National Park is happy to welcome Scott Nesbitt to the Waskesiu townsite administration team as the Realty and Development Advisor. Scott will provide administrative support for the development and/or alteration of buildings and property within Waskesiu as well as community

planning and regulatory compliance for businesses and private leaseholds in Waskesiu.

Please contact Scott if you are planning changes to your property or a new development at scott.nesbitt@pc.gc.ca or 306-479-0306.

Check your Downspouts

Did you know? A typical roof in the Waskesiu Cabin area collects 375 gallons of water for every 1” of rain that falls. That is enough to fill 8 bathtubs! Waskesiu receives an average annual rainfall of 11” – that equals approximately 4000 gallons (90 bathtubs) of water per year/cabin!

If your downspouts are not oriented properly, this water ends up collecting on your (or your neighbors) property, potentially affecting building foundations and causing other water related issues.

All leaseholders are required to direct runoff from their downspouts appropriately. This is usually to the street adjacent to your property where it is collected in storm drains. In the cabin area, the rear easement (where swales are present) is also an option.

Thank you for keeping Rubber Off the Road

Parks Canada, the Waskesiu Seasonal Residents Association, and the Waskesiu Community Council appreciate the continued diligence of residents in making residential streets safer by keeping the rubber off the roads.

Cabin owners and guests on the bird streets (Bluebird to Pelican) must park vehicles and/or boats so that the tires are not on the asphalt. This means vehicles and boats must be parked on the leasehold property or other designated parking areas. Keeping the streets clear ensures that emergency vehicles can access the area as needed.

Vehicles and/or boats that are improperly parked may be towed and owners charged under the National Park Regulation.

It’s The Leash You Can Do: Please keep your pet on a leash at all times

Make the most of summer with your favourite furry sidekick! No matter what activities you and your pet are planning, remember that pets must always be on their leash when visiting Prince Albert National Park. This is not only important for your pet’s safety but for the safety of the wildlife that roam freely within the park - wildlife may see your pet as a threat, competition or prey. If wildlife feel

threatened, they may attack or follow your pet back to you.

When visiting with your furry companion, remember these tips to ensure a safe and enjoyable trip to the park:

- Keep pets on a leash of **3 meters or less**, or in a suitable container or enclosure **at all times**.
- **Never leave your pet unattended** anywhere in the park. Wildlife, weather, and an unfamiliar environment can be scary or dangerous for your pet.
- **Select suitable activities and terrain** that align with you and your pet's abilities.
- **Pets are not allowed in certain areas in the park**, like buoyed swimming areas and adjacent beaches. Check trailheads and info centers for restrictions before leaving for your adventure.
- **Wait for the invitation** from others before approaching with your pet.

Reminder: Maintain your backflow preventer

Backflow preventer valves were required for all cabins, cottages, and commercial buildings in Waskesiu as of July 1, 2022. Leaseholders without a correctly installed backflow preventer are not compensated by Parks Canada for any damages from sewer back-ups. Leaseholders are strongly encouraged to carry sewer back-up insurance for their properties. Also, remember that backflow preventers require yearly maintenance. you have not yet installed your backflow preventer, please contact the Townsite office for a permit.

Reminder: Water Quality (THM)

Parks Canada routinely monitors drinking water quality to make sure it is within the guidelines set by Health Canada, including quarterly monitoring of trihalomethane (THM) levels.

As part of its water treatment process, Parks Canada uses chlorine. Chlorine is an effective disinfectant but can react with organic compounds in the water to produce a by-product on the surface called trihalomethanes (THMs). Their levels vary from year to year. The benefits of disinfection outweigh the risks of current THM



levels and untreated water. Drinking water that has 0.1 mg/l has a 1 in 1,000,000 carcinogenic risk based on someone consuming 1.5 litres every day for 70 years.

Residents and visitors to Waskesiu can reduce or eliminate THM in their drinking water by keeping water uncovered overnight, boiling it or filtering it with activated carbon filters.

Water/Sewer Procedures

Cabin owners and commercial operators are responsible for disconnecting their property from the main water system according to the *Fall Water Service Shut Down Directive*. Make this a part of your end-of-season routine.

See www.waskesiu.org for a handy disconnection instructional video for residents in the cabin area with water boxes

Cold weather can damage the seasonal water system if water is not properly disconnected at the end of the summer. Parks Canada may shut down water services to areas of Waskesiu that are at risk because of cold weather. When possible, there will be advance notification when the water shut off in the fall.

For water/sewer related matters, please contact panpassets@pc.gc.ca.

Firewood in the Park

Prince Albert National Park provides firewood for visitors at day-use areas in the park, including the Main Beach Day Use Area. Taking and using firewood from park facilities for personal use at residential leasehold or out of the park is theft. Please call 306-663-4522 to report firewood theft or misuse.

The parks budget for firewood has doubled in recent years and the revenues collected from fees only cover a portion of this cost. Prince Albert National Park is exploring strategies to reduce the cost and ensure those who personally benefit from this service pay their fair share.

Cabin/cottage owners, staff and business are all required to purchase their own firewood to be used in their private/commercial residents. We advise you to purchase locally cut firewood from reputable suppliers. Moving firewood from one location to

another can transport tree-killing insects and diseases that can destroy forests and urban trees. These pests move slowly on their own but can move long distances very quickly through the transportation of firewood.

CONSERVATION NEWS

Secure wildlife attractants to #KeepWildlifeWild

Parks Canada works hard so that wildlife and people can safely share this special place. To do this, Parks Canada is focused on public education and compliance, including enforcing laws as necessary. All this is to protect people, wildlife, and the health of the environment.

Please remember that human food and other attractants kill wildlife, and:

- It is illegal to feed, entice or disturb any wildlife. Violators may be charged under the Canada National Parks Act and could pay fines up to \$25,000.
- Food and scented items that are left alone, even for a minute, can attract wildlife. It is still illegal to feed wildlife, even if it is unintentional, and you can be charged for this. Keep all items with a scent in your residence or vehicle when not in use (tents are not safe storage spaces – animals can smell food in them).

Keep bears out of your neighborhood

A healthy bear population roams in and outside of the park, so you may come across one or more during your stay. Black bears are intelligent, curious animals who learn quickly. For example, if they receive rewards like human or pet food, garbage, barbecue grease, dish soap, toothpaste – anything that has a scent or flavour – they may learn to return in search of another easy meal. Bears are even known to seek objects for their texture, like boat and bike seats! Bears who frequent neighbourhoods are a danger to you and themselves. Bears who linger in the area, searching for more easy meals are a safety hazard.

Remember, *fed bears are dead bears*.

To reduce bear attractants at your residence, please:

1. Place all garbage and recycling into appropriate *bear-proof* containers. These are the large metal receptacles around the

townsite and campgrounds with a locking lid that prevent bears from getting inside.

2. Clean your BBQs as soon as they are cool and remove and clean out the grease trap/pan. Put the used grease and residue in the garbage receptacles as described above.
3. Do not feed birds, squirrels, or other wildlife. Food for small animals is also food for large ones.
4. Do not put bird feeders at your residence.

With your help we can keep bears wild, and even improve the survivability for bears who were habituated in the past.

What to do if you see a sick or dead animal

Everyone can help keep wildlife safe by not spreading sickness and disease amongst wildlife. To stop the spread of potential disease to or from the park, Parks Canada, Environment and Climate Change Canada, and the Canadian Food Inspection Agency advise the following:

- Do not approach or handle wildlife in the park, including sick, injured, or dead birds and animals.
- Call Jasper Dispatch at 1-877-852-3100 if you spot sick, injured or dead wildlife in Prince Albert National Park, or tell a staff member.
- Never feed wild birds from your hand or try to lure birds with food or seeds. This includes birdfeeders.

Sturgeon River Plains Bison Herd

The Sturgeon River plains bison (SRPB) herd is one of the few wild free-ranging bison populations in North America. The range of the herd includes areas in the southwest part of Prince Albert National Park. From 2006 to 2008, the Sturgeon River herd was determined to be over 450 animals. The annual winter wildlife survey counted 94 bison this year. The Sturgeon River plains bison continue to be in peril due to low population numbers, low calf and juvenile numbers, and unnatural ratios of age and sex that would indicate a healthy herd. The size of the herd is now a fraction of what it was in the mid-2000s.

The Sturgeon River Plains Bison Coordinating Committee, represented by The Sturgeon River Plains Bison Stewards, Ministry of Environment, Mistawasis Nêhiyawak, and PANP, hosted an Advisory Committee workshop December 5-7, 2023 in Big River, SK. The workshop included local

farmers/ranchers, local groups and organizations, rural municipalities, Indigenous communities, and conservation organizations. The workshop aimed to create awareness of the state of emergency for the survival of the herd, why the herd faces a state of emergency, gather input from all participants on new ideas and strategies to mitigate conflict between agriculture and bison, and to set forth a clear path of next steps for herd recovery.

Parks Canada continues to collaborate as part of the Coordinating Committee and work with interested partners to ensure the Sturgeon River Bison Herd remains a truly wild and rugged herd that will thrive on the land for many generations to come.

What’s going on with the lake trout in Kingsmere Lake?

Prince Albert National Park and partners are working together to ensure Kingsmere Lake has a healthy population of lake trout that provides meaningful experiences to all. We are creating a Kingsmere lake trout management plan with the guidance of the Kingsmere Lake Trout Advisory Board, which brought together Indigenous partners, anglers, subject matter experts and NGOs in fall 2022. Through working with the board over the last year and a half, Parks Canada aims to create a management plan that:

- Create a common understanding of what lake trout fishing on Kingsmere Lake means to visitors
- Supports traditional Indigenous activities on Kingsmere Lake
- Develops solutions that may inform future decision making to keep the trout population viable in Kingmere Lake.

The management plan will be available to the public in summer 2024. For more information, please email panptrout-touladisnpa@pc.gc.ca

Anyone fishing for lake trout in the park must have an endorsement card, numbered tag, and a national park fishing licence. The endorsement card and tags provide the park with valuable data about the estimated number of fish caught that summer. Please return endorsement cards or unused tags to the Visitor Centre or put them in the collection boxes at fish shacks and help conserve lake trout.

A Last Word from WSRA

Waskesiu Seasonal Residents Association (WSRA) is a not for profit association. We work with Parks Canada, the Waskesiu Community Council and other organizations and officials within Prince Albert National Park (PANP) on matters that concern the cabin and cottage owners who are seasonal residents in the Waskesiu townsite.

Those matters include *the occupancy, use,*

Stay in touch through our page at waskesiu.org (“our community” tab)
Or email us at waskesiusra@gmail.com

maintenance, leasing and improvement of cottages and cabins, and the areas in which they are located.

We also:

- ✓ Promote understanding and co-operation between leaseholders and others using PANP.
- ✓ Work to protect and enhance the environment, infrastructure, and recreational and cultural facilities within the Waskesiu townsite.
- ✓ Provide a forum to discuss and share information on matters of concern to leaseholders.

The elected WSRA Board of Directors is made up of members from diverse backgrounds who represent the cabin and cottage area as equally as possible.

2023 - 2024 Board of Directors

Rob Phillips, President	Jennifer Wood, Chair
Kurt Wintermute	Rob Oswald
Paul Pinder	Ron Jones
Conor Quinn	Terry Baerg
Kelly Prodanuk	

If you are interested in serving the community through the WSRA, please contact any member of the governance committee, or email us to learn more about opportunities.

The WSRA honours the memory of Cheryl Cuelenaere who we sadly lost this year. She was dedicated to Waskesiu and community, serving on the Board of Directors of the WSRA and volunteering in many capacities throughout her time at the lake. She will be greatly missed.

Add your voice . . .

The membership fee structure is set up so that you save money and add convenience by renewing your membership for 5 years.

You may renew your membership at the old rate of \$30 annually or \$100 for a five year membership until August 9, 2024. After that there is a slight increase of \$35/annually or \$125 for five years.

Payment can be made through cheque or email transfer. We will provide you with information on your membership standing through email. When your membership expires, we will contact you about membership renewal.

There are **3 ways to renew your membership.**

1. Mail a cheque along with your information to our treasurer, Kelly Prodanuk, PO Box 36, Waskesiu, Sk S0J 2Y0
 2. Email your information along with an email transfer to waskesiusra@gmail.com.
 3. Sign up and pay your dues at our annual meeting
- Please include your name, address, lake address and email address.

**Another way to add your voice. . .
Attend our AGM!**

As in previous years we are teaming up with the Waskesiu Community Council to engage with the Waskesiu community in a meaningful way. Park representatives will be on hand to answer questions. Here are the details:

**Saturday, August 10th, 2024 - Terrace Gardens
9 a.m.**

Waskesiu Community Council AGM
Waskesiu Seasonal Residents Association AGM
Q and A with Parks Canada

**12 pm: Fundraising BBQ hosted by the Waskesiu
Volunteer Fire Department**



We acknowledge that Waskesiu is on the traditional lands of the Cree Peoples, signatories to Treaty 6, and the Homeland of the Métis. We pay our respect to the First Nations and Métis ancestors of this very special place and reaffirm our relationship with one another.